

Economical • Spacious • Efficient • Global • Intelligent



LE  PARD 47 POWERCAT



Leopard 47 Powercat

Introducing

Leopard Catamarans offers the elegant, powerfully built Leopard 47 Powercat featuring ground breaking innovations in comfort, safety and performance.

Built using the latest technology and materials, the Leopard 47 Powercat integrates an open-plan layout with exceptional interior volume. She is a comfortable powercat that combines spacious accommodations with reliable and proven performance and efficiency.



The Leopard 47 Powercat's innovative design is taken from the successful Leopard Catamarans sailing line that has won multiple 'Boat of the Year' awards and acclaim in the international press.





The Leopard 47 Powercat features an outdoor dining area, a roomy flybridge, and a centrally located helm station on the flybridge that gives you access to well placed controls powering two extremely fuel efficient diesel engines.

The deck layout is clear and uncluttered, with walk-through access to the aft swim platform and wide side decks with the large cockpit protected by the above flybridge.



The roomy, hard-top covered flybridge features wrap-around seating for 8, an optional fridge and cooler, plus centrally located helm station. Large, sleek windows along the coachroof sides add to the elegant look of the deck and give the interior a light, voluminous feel and a 360° view.



Leopard 47 Powercat

Exterior





Leopard 47 Powercat

Interior

Soft overhead lighting, quality upholstery and light wild cherry wood finishes give a bright and airy feel to the Leopard 47 Powercat interior. Standard Corian surfaces and harmonious faux leather fabrics are used throughout. Several interior color options are available.

Large windows provide panoramic views and allow natural light to flood in. Opening hatches add to the comfort of this interior living area.





The Leopard 47 Powercat's galley-up design incorporates a spacious saloon area in a wild cherry wood finish with a wide U-shaped settee and an aft-facing galley. A softly curved Corian cocktail bar overlooks the adjoining cockpit area.

The navigation station, with large chart table and optional remote auto pilot, is positioned to starboard. The upgraded instrumentation panel houses optional navigation instruments, CD/radio stereo system and VHF.



The ergonomic galley layout features heat-resistant Corian counter tops. Fully equipped, the compact galley has a standard stainless steel stove with oven and broiler and a double sink with mixer tap and ample counter and cabinet space.

The companionway to the owner's suite is to starboard and can be closed off with a sliding door system for extra privacy when desired (3 cabin layout).



Leopard 47 Powercat

Saloon and Galley





Leopard 47 Powercat

Accommodations

The Leopard 47 Powercat is available in 3 or 4 cabin owner layouts. In the 3 cabin layout, there are two guest cabins with en suite heads in the port hull, while the starboard hull is entirely dedicated to the owner, with a large master cabin, lounge area and private bathroom forward.

Each guest cabin has been thought out with practicality and comfort as a premium and boasts good ventilation, plenty of storage and excellent lighting. The forward guest cabin also features a storage area in the forepeak or an optional berth.

Two spacious heads with separate shower stalls serve the two guest cabins and each feature a Corian washbasin with mixer tap, large separate shower stall, mirrored vanity unit and domestic-sized marine toilet.



The master stateroom features a large double berth, book shelf, discrete reading lights, a tall hanging locker and plentiful shelving.

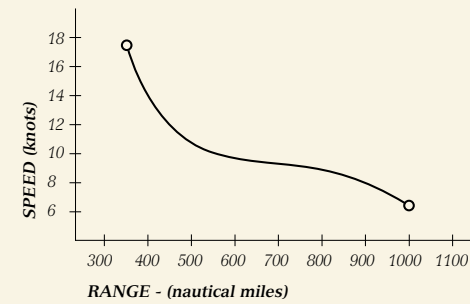
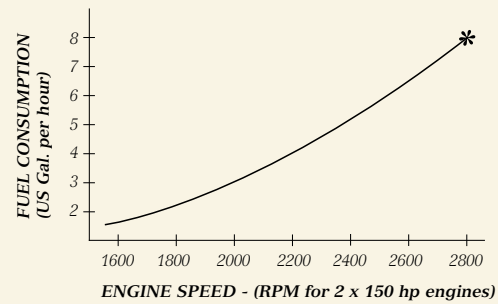
This owner suite also incorporates a separate study/lounge area with a modern settee, desk, reading light, overhead cabinet and dedicated hanging locker with shelf.

The very spacious owner's shower room includes a Corian washbasin with mixer tap, large separate shower stall with adjustable shower head, mirrored vanity unit and domestic-sized marine toilet.





Powered by 2 straight drive 150 hp John Deere diesel engines, and coupled with an efficient hull design based on optimization studies from test tank data, this power cat offers exceptional fuel efficiency at the 12 – 15 knot range, and better than average efficiency at higher speeds.



Based on 1200 l (317 US Gallon) capacity. 10% tank reserve allowed for. Boat is in half load condition. Data is based on optimum conditions, equipment condition, operator handling, sea state, and quality of fuel. Variations will affect actual performance and consumption.

The helm station is fitted with an electronic double lever throttle, tridata display, depth & speed gauge via GPS, and autopilot control with corepack & hydraulic pump and also features a handheld VHF radio with loudspeaker plus a second handset & speaker at navigation station.

The navigation station, with large chart table and optional remote auto pilot, is positioned to starboard. The upgraded instrumentation panel houses optional navigation instruments, CD/ radio stereo system.



Leopard 47 Powercat



LEOPARD 47 POWERCAT STANDARD SPECIFICATIONS

Length overall	47 ft 3 in.	14.42 m
Waterline length	47 ft 2 in.	14.38 m
Beam	24 ft 10 in.	7.57 m
Draft	3 ft 3 in.	0.985 m
Displacement	32,045 lbs	14,500 kg
Fuel capacity	317 US gal.	1200 l
Water capacity	320 US gal.	1210 l
Engines	150 hp x 2	

The Leopard 47 Powercat contains all top features including blue water capability, great performance, solid construction, a superb anchoring system, excellent ventilation, high quality equipment, large tank capacities standard, a standard hard top, and offers excellent value.

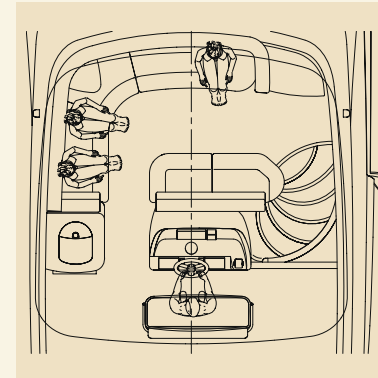
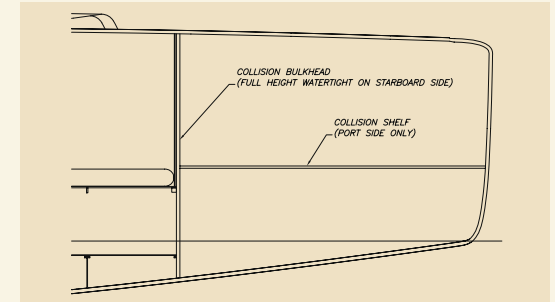
The standard equipment can be enhanced by a range of quality optional items including generator, air conditioning, water maker and much more, call for details.

Robertson and Caine uses advanced composite GRP sandwich construction. A vacuum bonded E-glass end-grained balsa cored hull ensures a precise resin to glass ratio, and is highly compression and impact resistant. E-glass stitched fabric delivers maximum strength.

Isophthalic gelcoat and resin rich tissue helps prevent osmosis. The hull laminate is light and durable resulting in a dynamic weight carrying capacity and excellent motion reaction of the hull.

Bulkhead:

The collision bulkheads prevent water intrusion in case of damage to the bows.



Flybridge:

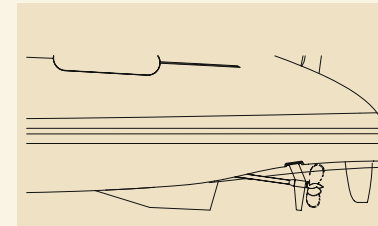
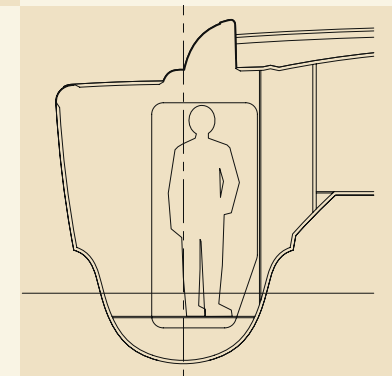
Centralised helm position provides great visibility on all corners for ease of maneuvers.

Cushioned bench seating for up to eight passengers.

Wet bar with single lever faucet and cooler compartment.

Hull Chine:

Increases interior volume without compromising hull shape and minimizes wetted surface for more speed. Water is deflected away from the hull thus keeping deck drier, while the radiused chine intersection reduces slapping.



The concave in the aft sections of the hulls around the props allows a shallower shaft angle, reducing water disturbance and prop wash, resulting in a superior and more efficient thrust to the propellers, a shallower draft and better protection of the shaft.

Leopard 47 Powercat

Specifications

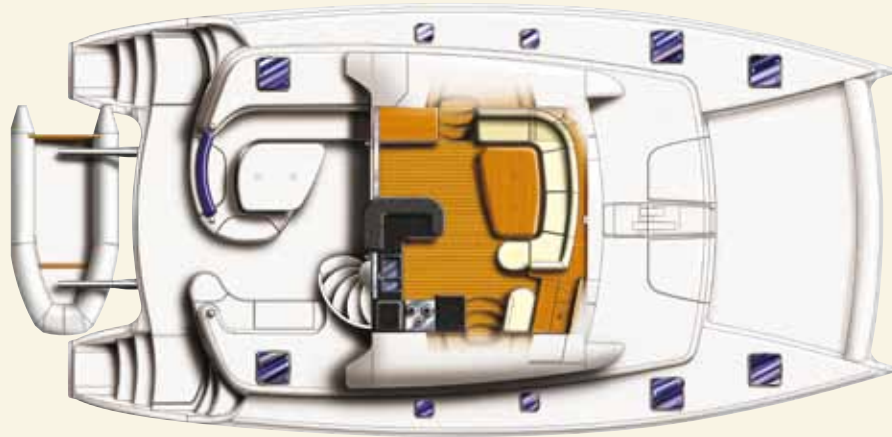
FLYBRIDGE



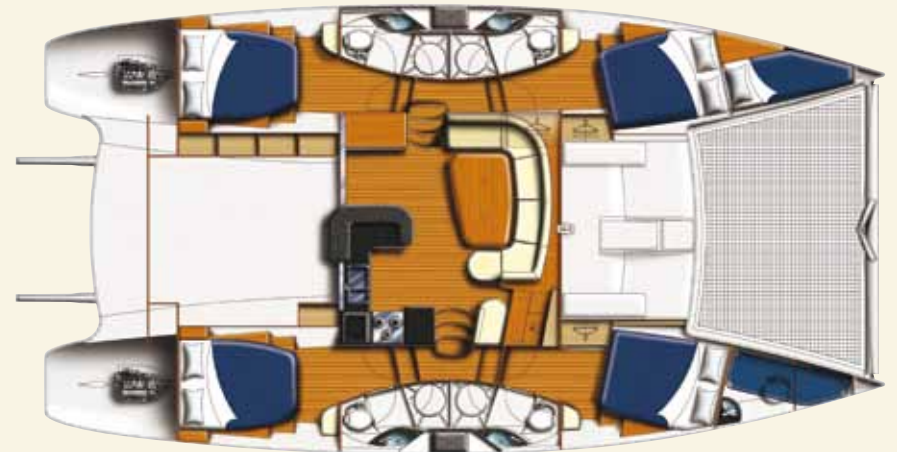
THREE CABIN LAYOUT



MAIN DECK



FOUR CABIN LAYOUT





LE PARD
CATAMARANS
www.leopardcatamarans.com